



HUMBERSIDE
LMCs

The professional voice of general practice

Cold Chain Requirements For Vaccines

Clinical and Prescribing

The LMC has become aware of several recent breaches by practices with regard to the cold chain standards for storage of vaccines. This advice sheet has been drafted with the assistance of NHS England to remind practices of the requirements set out by Public Health England and to provide signposting to further guidance.

Key Messages

- All practices should have a validated vaccine fridge – domestic fridges are not suitable for storing vaccines
- Validated medical grade cool boxes (carriers) and cool packs must be used for transporting vaccines e.g. for use at another site
- Formal temperature monitoring must be carried out daily and appropriately recorded
- Fridge thermometers must be regularly calibrated
- Vaccine fridges should be serviced annually
- Keep vaccines in their original packaging
- Ensure that at least two named, trained people are responsible for ordering, receipt and care of vaccines (one from the nursing team and one from management).
- Train all members of the primary care team about the importance of good vaccine management
- Keep records in a consistent format
- Carry out a routine vaccine management review quarterly

Requirements of a Validated Vaccine Fridge

A validated vaccine fridge must be:

- suitable for the storage of vaccines between +2o C and +8oC – a mid-range of +5oC is good practice
- locked or kept in a locked room
- used only to store vaccines and medicines, i.e. food or specimens must not be stored alongside vaccines
- large enough to hold the stock and allow sufficient space around the vaccine packages for air to circulate
- wired into switchless sockets to avoid them being turned off accidentally
- safe – for example, by carrying out visual inspections and regular PAT testing.

Vaccines stored in validated vaccine fridges must be kept in their original packaging.

What to do if you have concerns that there may have been a breach in your cold chain

- Do not dispose of vaccines until you have sought advice. Label the vaccines 'do not use' and quarantine the fridge.
- Contact your local screening and immunisation team in NHS England immediately for further support and

advice on any vaccine issues, including incidents. The team structure and contact details are included in this document.

- Contact the Health Protection Team at your local Public Health England centre if you need technical advice regarding vaccination, contact number : 01904 687100

Further guidance

Protocol for ordering, storing and handling vaccines, Public Health England

<https://www.gov.uk/government/publications/protocol-for-ordering-storing-and-handling-vaccines>

Keep your vaccines healthy poster, Public Health England

<https://www.gov.uk/government/publications/keep-your-vaccines-healthy-poster>

Vaccine incident guidance: responding to vaccine errors, Health Protection Agency

<https://www.gov.uk/government/publications/vaccine-incident-guidance-responding-to-vaccine-errors>

What to do if issues with vaccines storage management are identified during a CQC Inspection, Public Health England

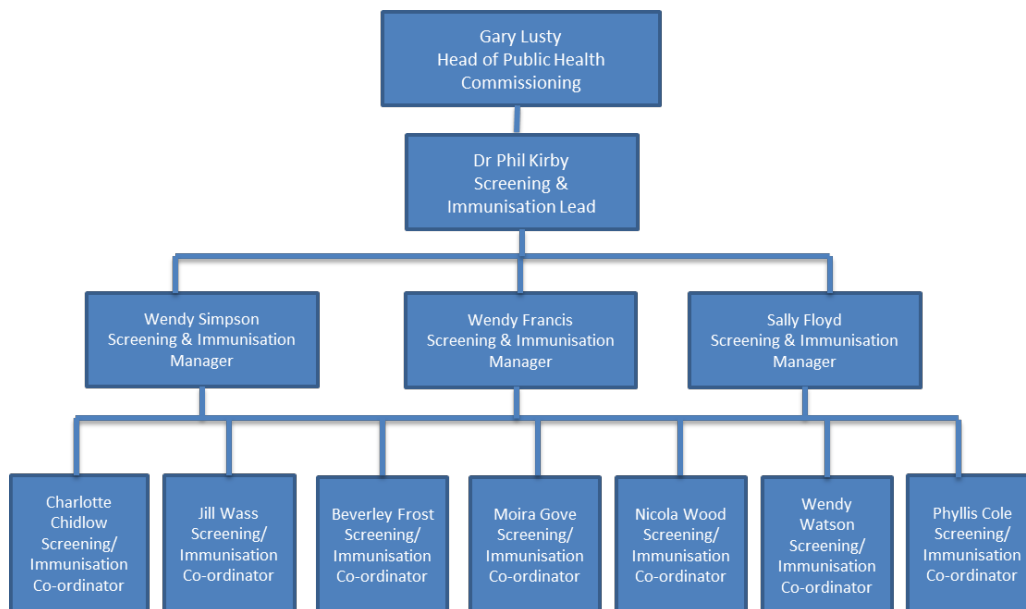
https://www.gov.uk/government/uploads/system/uploads/attachment_data/file/361629/Vaccine_storage_management_Care_Quality_Commission_Inspection_a_CC_update.pdf

Storage, Distribution & Disposal of Vaccines, Green Book Chapter 3 v3

https://www.gov.uk/government/uploads/system/uploads/attachment_data/file/223753/Green_Book_Chapter_3_v3_0W.pdf

Public Health England Screening & Immunisation Team Structure

The diagram below shows the current Screening & Immunisation Team Structure and provides key contact information.



Each CCG has a nominated Screening and Immunisation Coordinator who will be making contact with their local practices, Directors of Public Health and other partners in the near future.

SIT staff should be contacted directly via their mobile, or by e-mail. Admin support to the SIT is provided by Tracey Archer (tracey.archer@nhs.net)

CCG	Name of Screening & Immunisation Coordinator	Contact details (and normal working days)
North Lincolnshire	Vanessa Covey	vanessa.covey@nhs.net 07730-391491 (Mon - Fri)
North East Lincolnshire	Vanessa Covey	As above
East Riding of Yorkshire	Nicola Wood	nicola.wood6@nhs.net 07900-715386 (Tue - Fri)
Hull	Nicola Wood	As above

The strategic lead for each of the screening and immunisation programmes is provided by one of the SIL and SIMs, whose contact details are as follows:

Screening and Immunisation Lead and Managers	Contact details (and normal working days)	
Phil Kirby (SIL)	phil.kirby1@nhs.net	07900-715256 (full time)
Sally Floyd (SIM)	sally.floyd@nhs.net	07545-512663 (full time)
Wendy Francis (SIM)	wendysimpson1@nhs.net	07900-715452 (Mon, Tue, Wed)
Wendy Simpson (SIM)		As above



The Humberside Group of Local Medical Committees Ltd

Albion House
Albion Lane
Willerby
Hull
HU10 6TS

01482 655111
humberside.lmcgroup@nhs.net
www.humbersidelmc.org.uk

Registered in England & Wales. Registered No. 8624868. The Humberside Group of Local Medical Committees Limited does not provide legal or financial advice and thereby excludes all liability howsoever arising in circumstances where any individual, person or entity has suffered any loss or damage arising from the use of information provided by The Humberside Group of Local Medical Committees Limited in circumstances where professional legal or financial advice ought reasonably to have been obtained. The Humberside Group of Local Medical Committees Limited provides representation, guidance and support to GPs and practices. The Humberside Group of Local Medical Committees Limited strongly advises individuals or practices to obtain independent legal/financial advice.

@HumbersideLMC. Follow us for news and updates.